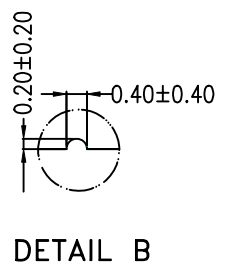
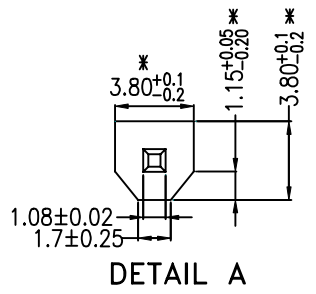
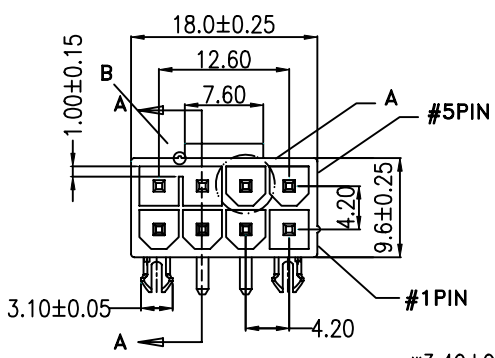


REV.	ECN.NO.	DATE
01	RELEASED	3/27-'14



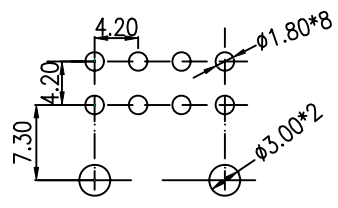
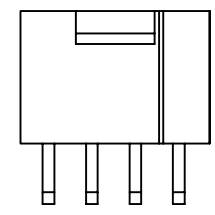
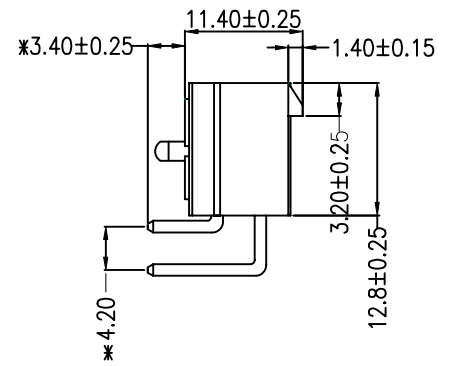
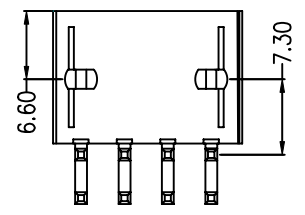
**Features:**

- \* Available in 08 Circuits
- \* Material: L.C.P ( UL 94V-0) Black
- \* 1.08mm(.045") Square Pin  
long pin 23.80mm short pin 15.40mm
- \* Pin Material:Brass/Tin-Plated or Gold-Plated

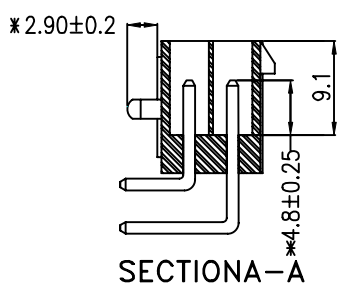
**Ordering information:**

CONNPCIF1122-H  
1 2 3 4 5 6 7 8

- 1 W=Wafer
- 2 No. of Circuits 08
- 3 R=Right Angle
- 4 Plated  
T=Tin G=Gold
- 5 P:With Post
- 6 1=Solid PIN
- 7 Color: □:Nature F:Green  
A:Black G:Blue  
B:Brown H:Purple  
C:Red I:Gray  
D:Orange J:White  
E:Yellow K:Pink
- 8 LCP dip: 3.40mm



RECOMMEND P.C.B LAYOUT  
TOP VIEW



SECTION A-A

REV			Drawing By Data		ShenZhen PCIDV Electronics Co.,Ltd.	
Units	MM	Scale	LiXing 3/27/2014			
Tolerance Unless □ otherwise Specified			Reviewed By Data		Date	3/27-'14
.X	?	±0.38	Approval By Data		Sheet	1 of 1
.XX	?	±0.25			Title	
.XXX	?	±0.20			2*4pin 4.20 Pitch PCI-E Connector 折弯90度	
Angle	?	± 3°			Third Angle Projection	
					Drawing No.	CONNPCIF1122-H
					REV	01